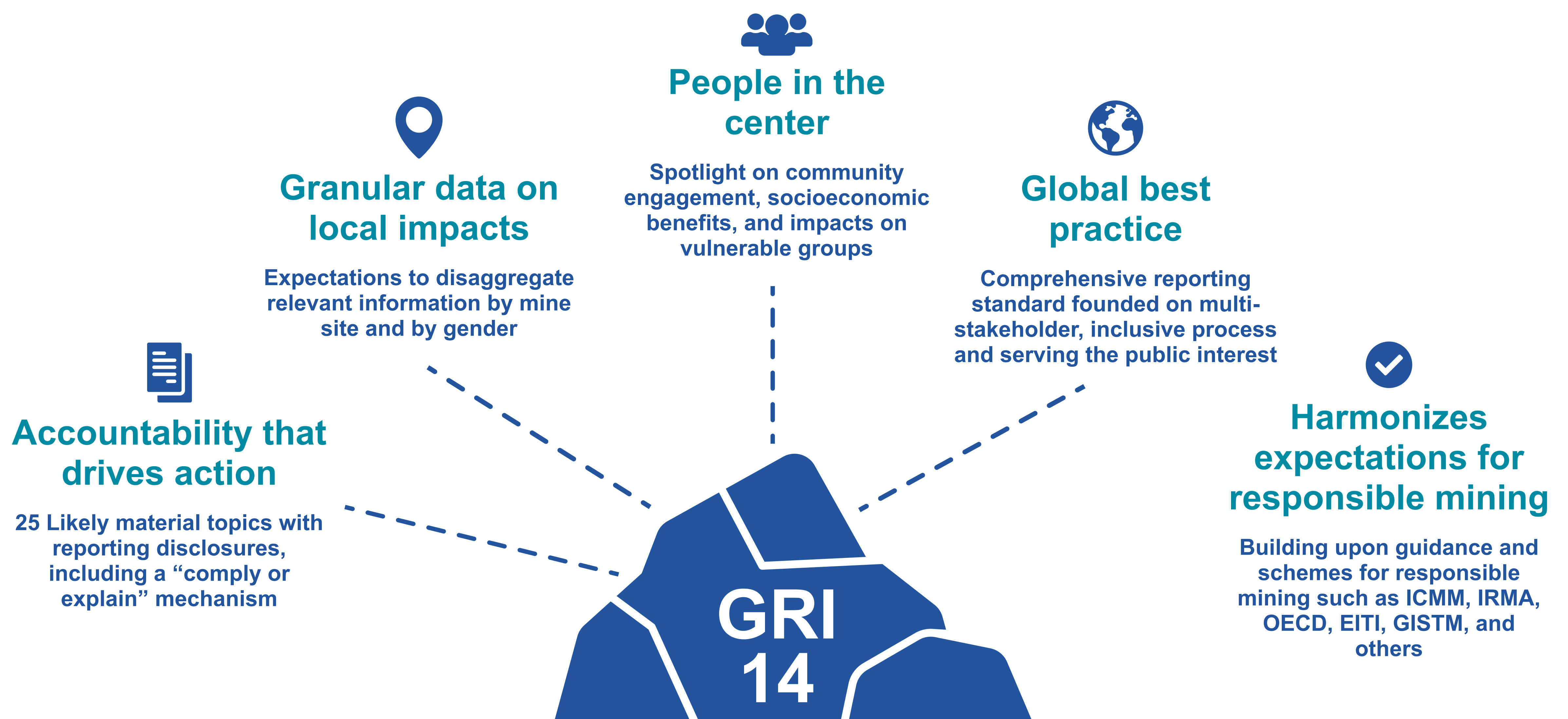
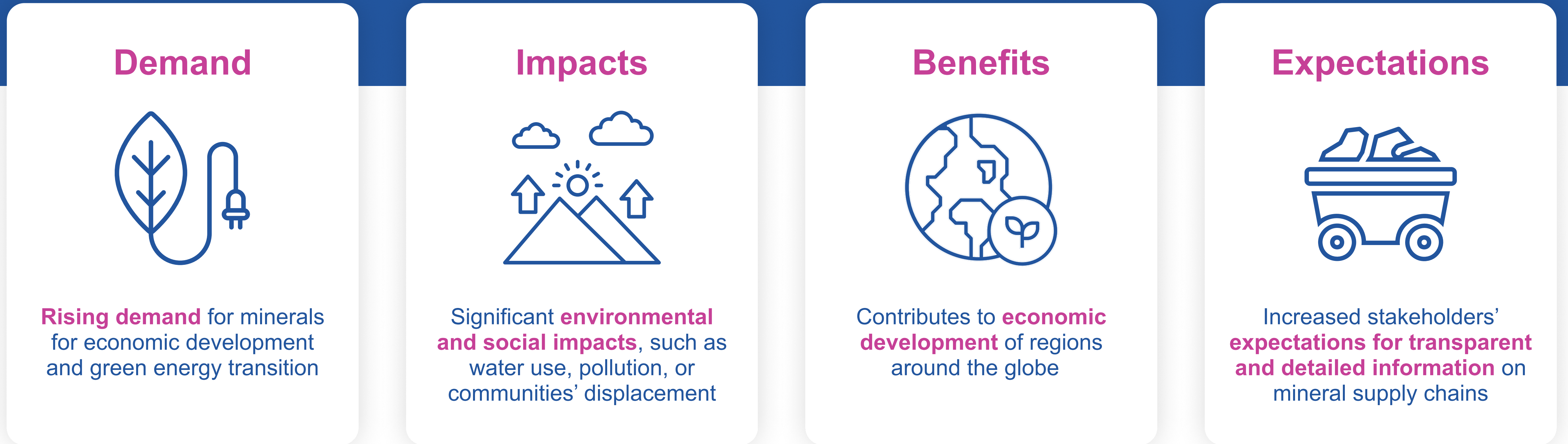


# GRI 14: Mining Sector 2024



GRI 14: Mining Sector 2024 is a comprehensive, global sustainability reporting standard that focuses on the impacts from mining. The Standard provides a common set of metrics that represent the broad information needs of stakeholders, providing a baseline for transparency in the sector.

## Drivers of transparency



## Why is GRI 14: Mining Sector needed?

	Benefits for reporting organizations	Benefits for information users
A single standard for reporting on all sustainability impacts from the sector	✓	✓
Designed for companies of any size, from any part of the world, mining any commodity	✓	✓
Based on existing transparency expectations from stakeholders in the sector	✓	✓
Generates comparable, granular, and reliable data about companies' contributions to sustainable development	✓	✓
Go-to tool for information users to engage with companies and hold them accountable of their impacts		✓
Best preparation for companies to face new legal requirements and acquire a social license to operate	✓	



GRI is an independent, international organization that helps businesses take responsibility for their impacts. The GRI Standards provide the global common language for transparency and dialogue between companies and their stakeholders.